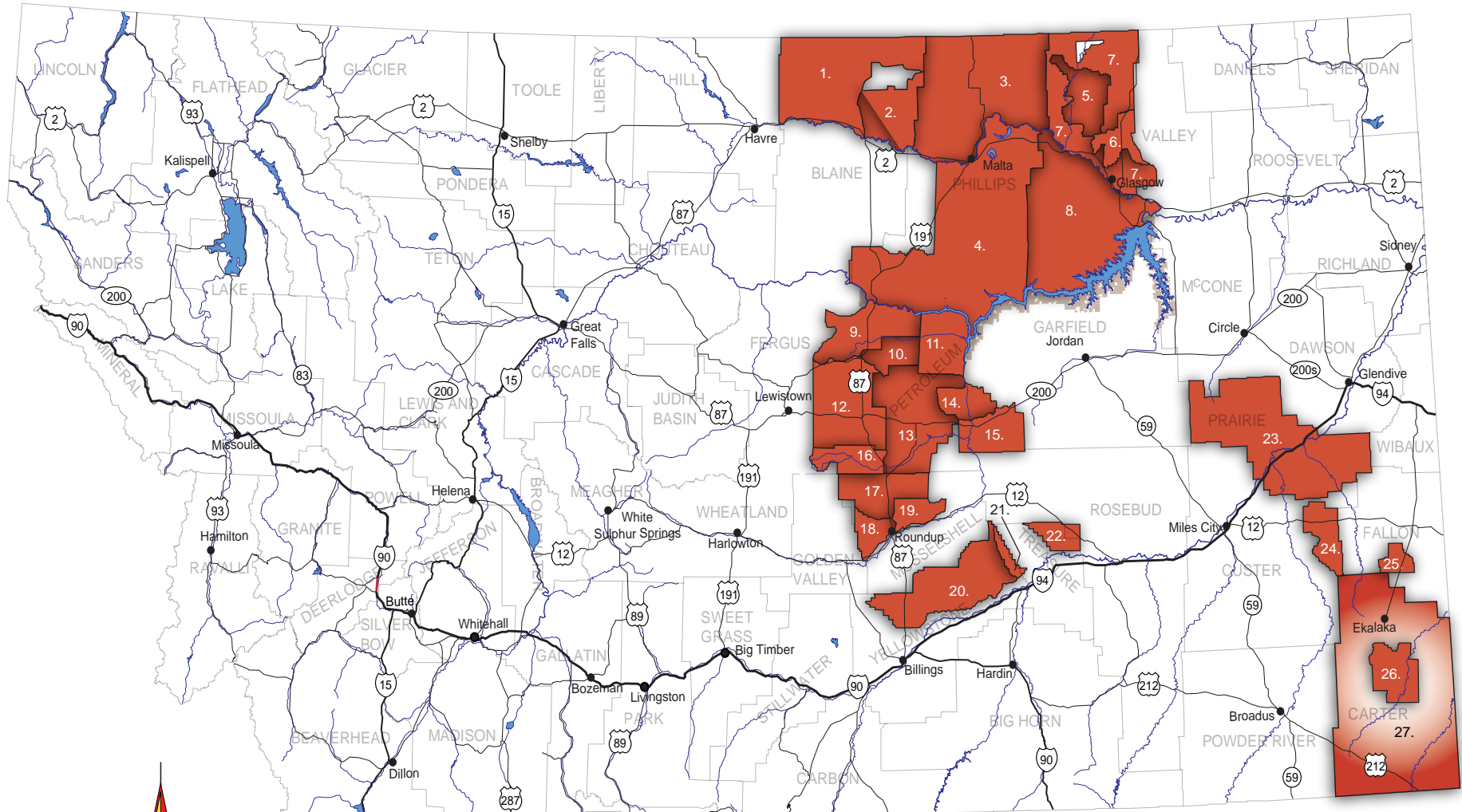
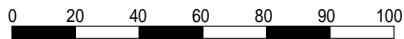


MONTANA COOPERATIVE STATE GRAZING DISTRICTS



Scale in Miles



- | | | | |
|-------------------|---------------------|-------------------|--------------------------|
| 1. North Blaine | 8. Badlands | 15. Weede | 22. Froze-to-Death |
| 2. Wayne Creek | 9. Indian Buttes | 16. Flatwillow | 23. Prairie County |
| 3. North Phillips | 10. Crooked Creek | 17. Devil's Basin | 24. East Custer |
| 4. South Phillips | 11. Chain Buttes | 18. Pole Creek | 25. Red Buttes |
| 5. Willow Creek | 12. Grass Range | 19. Kilby Butte | 26. C & B |
| 6. Buggy Creek | 13. Winnett | 20. Buffalo Creek | 27. Missouri River Basin |
| 7. North Valley | 14. Williams Coulee | 21. Fort Pease | |