

BILLINGS, MONTANA



MONTANA STOCKGROWERS ASSOCIATION

**ANNUAL
CONVENTION
& TRADE SHOW**

DECEMBER 11-13

• 2018 •

REGISTRATION BROCHURE

**IF YOU'RE IN THE CATTLE BUSINESS THIS IS
ONE EVENT YOU CAN'T AFFORD TO MISS!**



Providing **EDUCATION, INFORMATION, FELLOWSHIP** and **DECISION-MAKING OPPORTUNITIES** for Montana's cattle industry's leading members
EVERY YEAR.

REGISTER TODAY!

TABLE OF CONTENTS

Unbeatable Value	2
Schedule of Events	3
Montana CattleWomen Schedule	5
MSGA Trade Show	6-7
Education	8 - 9
Featured Events	10
Expiring Policy	12
Join Us for Fun	14
Live Auctions	14
Sponsors	18
MPLC & MASGD	22
Lodging Information	25
Registration	28

**HERE'S WHAT
YOU
CAN EXPECT**

**CAMARADERIE
FUN
BUSINESS
EDUCATION**

THE VALUE OF THE MSGA ANNUAL CONVENTION AND TRADE SHOW

Full Registration Includes:

Opening General Session

Admission to all Stockgrowers Colleges

Northern Ag Network & The Best Of Beef Lunch

Two Day Admission to the Trade Show

Trade Show Celebration Dinner Event

President's Lunch

Access to all Policy Meetings

Grand Finale Banquet



Share your experience online #MSGA18

TUESDAY, DECEMBER 11, 2018

- 7:00 am - 2:00 pm Session Breaks @ *Northern*
- 8:00 am - 12:00 pm Large Vendor Move In @ *Double Tree*
- 7:00 am - 11:30 am MSGA Board of Directors Meeting @ *Northern*
- 8:00 am - 11:00 am Montana Stockgrowers Foundation Trustee Meeting @ *Northern*
- 10:00 am - 11:30 am Grass Conservation Commission Meeting @ *Northern*
- 12:00 pm - 4:00 pm Registration @ *Double Tree*
- 12:30 pm - 2:30 pm Montana Public Lands Council & Montana Association of State Grazing Districts Joint Board Meeting @ *Northern*
- 1:00 pm - 4:00 pm Leadership Series Meeting @ *Northern*
- 1:30 pm - 5:00 pm Beef Production & Marketing Committee Meeting @ *Double Tree*
- 3:00 pm - 5:00 pm Montana Public Lands Council Annual Meeting @ *Northern*
- 3:00 pm - 5:00 pm Montana Public Lands Council Annual Meeting @ *Northern*
- 3:00 pm - 6:00 pm General Exhibitor Trade Show Move In @ *Double Tree*
- 4:00 pm - 5:30 pm Young Stockgrowers Meeting @ *Northern*
- 4:00 pm - 5:00 pm Steer of Merit Meeting @ *Northern*
- 5:00 pm - 7:00 pm Kick Off Social @ *TEN*

WEDNESDAY, DECEMBER 12, 2018

- 6:30 am - 12:00 pm Session Breaks @ *Double Tree*
- 7:30 am - 5:00 pm Registration @ *Double Tree*
- 8:00 am - 9:00 am Opening General Session @ *Northern*
- 9:00 am - 12:00 pm Stockgrowers Colleges @ *Double Tree*
See pages 8-9 for more details
- 10:00 am - 12:00 pm MCW Board of Directors Meeting @ *Northern*

WEDNESDAY CONTINUED

- 10:30 am - 1:30 pm MT Ag Safety Program @ *Double Tree*
- 11:00 am - 8:00 pm Trade Show Open @ *Double Tree*
- 12:00 pm - 1:00 pm Northern Ag Network & The Best of Beef Lunch @ *Northern*
- 1:45 pm - 5:30 pm Land Use & Environment Committee Meeting @ *Double Tree*
- 1:45 pm - 5:30 pm Tax, Finance, & Ag Policy Committee Meeting @ *Double Tree*
- 2:00 pm - 4:00 pm MCW Annual Meeting @ *Northern*
- 2:00 pm - 5:00 pm Montana Range Days Steering Committee @ *Double Tree*
- 4:00 pm - 5:00 pm MCW Installations @ *Northern*
- 6:00 pm - 8:00 pm Trade Show Dinner with Prime Time Beef @ *Double Tree*

THURSDAY, DECEMBER 13, 2018

- 6:30 am - 12:00 pm Session Breaks @ *Double Tree*
- 8:00 am - 3:00 pm Registration @ *Double Tree*
- 8:00 am - 9:00 am MCW New Board of Directors Meeting @ *Northern*
- 8:00 am - 11:00 am Second Reading of Resolutions @ *Double Tree*
- 10:00 am - 3:00 pm Trade Show Open @ *Double Tree*
- 11:30 am - 12:30 pm Third/Final Reading of Resolutions @ *Double Tree*
- 12:30 pm - 1:30 pm President's Lunch @ *Double Tree*
- 1:30 pm - 5:00 pm Stockgrowers Colleges @ *Double Tree*
See pages 8-9 for more details
- 1:30 pm - 5:30 pm Affiliate Mentorship Program @ *Double Tree*
Sponsored by Merck Animal Health
- 1:30 pm - 2:30 pm MT Ag Safety Program @ *Northern*
- 3:00 pm - 5:00 pm Women of the West Fair @ *Double Tree*
- 6:00 pm - 8:00 pm Grand Finale Banquet @ *Northern*



We Are Stronger Together

Managing political advocacy and regulation is the Montana Stockgrowers Association's (MSGA) core business, and we strive to safeguard ranchers interests from regulatory impact. Investing in MSGA is a strategic move by which ranchers can mitigate threats or create opportunities by affecting public policy decisions.

+ U.S. Congress

MSGA is the go to authority in Montana for members of Congress seeking counsel on federal tax policy, endangered species act, farm bill, federal land policy, waters of the U.S. and expanding international markets for U.S. beef, just to name a few. Estate taxes on family owned ranches often exceed cash and other liquid assets, often forcing the sale of land, property and equipment.

+ Helena and Washington D.C. Agency Representation

MSGA actively engages with the Board of Livestock, State Land Board, Department of Natural Resources and Conservation, Department of Environmental Quality, and the Fish and Wildlife Commission to advocate rancher's interests. This representation includes attending monthly meetings, briefing senior agency staff, and influencing agency decisions.

+ Montana Legislature

MSGA advances ranchers interests on numerous issues such as cattle health and brand enforcement regulations, water rights, public access, wildlife management and private property rights, everyday at the legislature.

Not only does your MSGA membership give you direct contact with companies that can help improve your bottom line, but it also provides access to the Stockgrower Update, a monthly newsletter, which you have the exclusive opportunity to read online! From the latest policies and regulations being tackled by MSGA, to the most exclusive insight and information.

When you choose to invest in a membership with MSGA, you are helping to create a better business climate for Montana ranchers. Together, we have and will continue to address the challenges within our industry. We are at a time of tremendous possibilities and, with your partnership, we have the opportunity to work together to continue to build a strong front across the industry sectors of Montana.

MONTANA STOCKGROWERS ASSOCIATION

420 N. California | Helena, MT 59601

Phone 406-442-3420 | Fax: 406-449-5105

www.mtbeef.org



A **MONTANA CATTLEWOMAN** is a **STRONG, ENTHUSIASTIC WOMAN**, willing to **STAND UP** for awhat **SHE BELIEVES IN**.

She is equally at home on a ranch, in a meeting, at a social function, or a legislative venue. She is someone who strongly supports the cattle industry and Montana's agricultural heritage through education and promotion.



KAE MCCLOY
MCW President

WEDNESDAY, DECEMBER 12

9:30 am - 12:30 pm.....MCW Board of Directors Meeting

2:00 pm - 4:00 pm..... MCW Annual Meeting

4:00 pm - 5:00 pm..... MCW Installation

THURSDAY, DECEMBER 13

8:00 pm - 9:00 am.....MCW New Board of Directors Meeting

3:00 pm - 5:00 pm..... Women of the West Fair

TRADE SHOW HOURS

Wednesday, December 12
11:00 am - 8:00 pm

Thursday, December 13
10:30 am - 3:00 pm

The **MSGA TRADE SHOW** is the **LARGEST SHOW** in the ranching business hosted **IN MONTANA.**

Whether you are looking for new equipment, the latest in technology, fencing supplies or pharmaceuticals, this is the one show you can't afford to miss.

MSGA Trade Show Exhibits include:

Animal Health Products | **Animal Identification** | **Breeders**
Buildings | **Chutes** | **Consulting Services** | **Equipment**
Feed Additives & Accessories | **Finance & Insurance**
Government Agencies | **Hay Equipment & Accessories**
Herd Management | **Industry Associations** | **Marketers**
Publications | **Ranches** | **Real Estate** | **Retail** | **Scales**
Seed Products | **SoftwareWeed/Pest Control** | **Western Art**

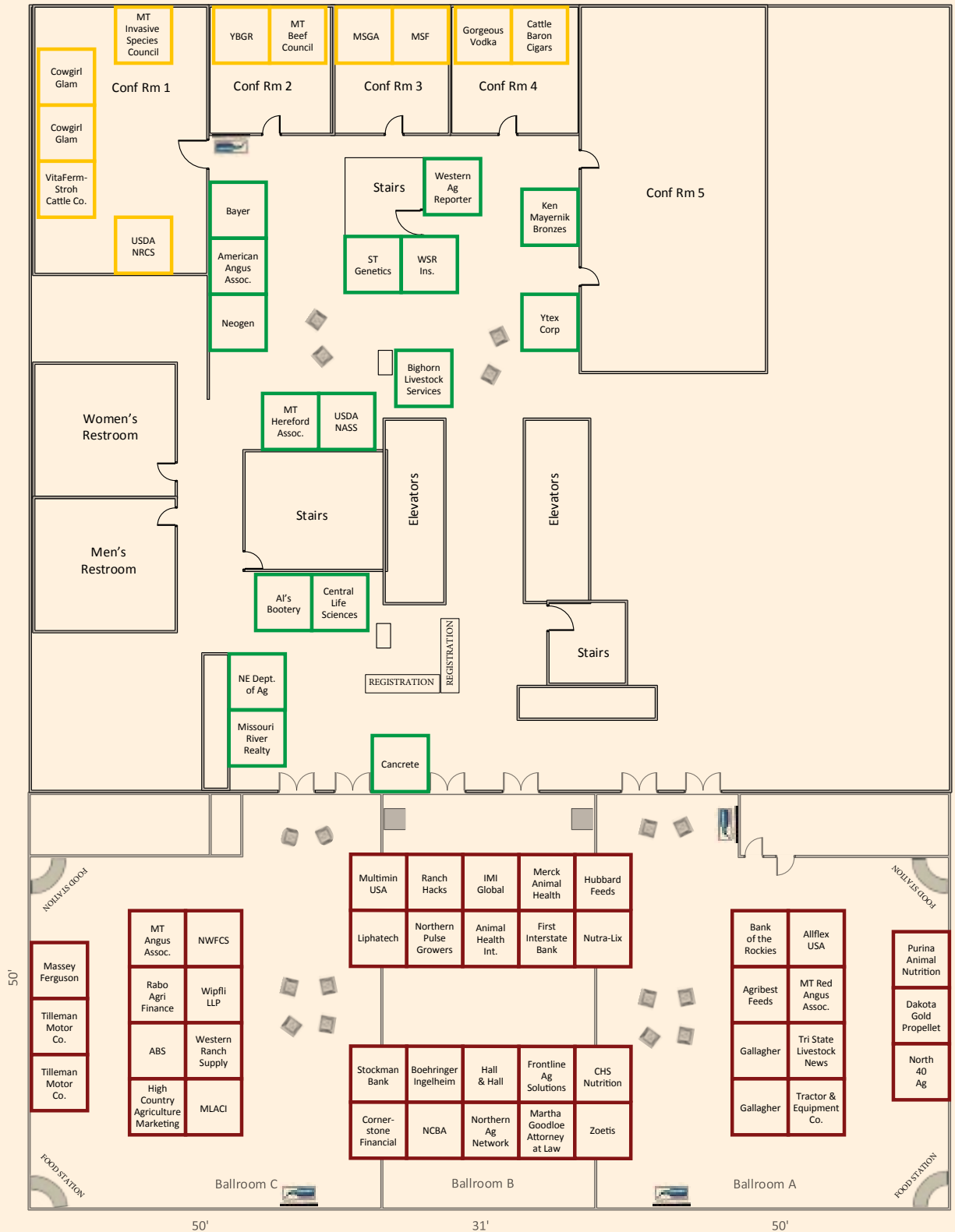
For a complete list of exhibitors and to plan your Trade Show schedule, visit www.mtbeef.org



Share your experience online #MSGA18

3RD FLOOR DOUBLE TREE BY HILTON

- Prime Exhibitor Booth (8'x8')
- Choice Exhibitor Booth (8'x8')
- Select Exhibitor Booth (8'x8')



These 60-minute sessions offer attendees valuable educational tips and a chance to enjoy face-to-face talks and hands-on technology education.

STOCKGROWERS COLLEGE - SPONSORED BY MT RED ANGUS ASSOCIATION

Wednesday, Dec 12 | 10:30 am

Thursday, Dec 13 | 3:30 pm

Dr. Andy Roberts | Management considerations for sustainable & profitable heifer development.

Craig Uden, Darr Feeders | Genetic & Management considerations for building a sustainable cowherd that can produce marketable feeder calves.

STOCKGROWERS COLLEGE - SPONSORED BY BOEHRINGER INGELHEIM

Thursday, Dec 13 | 1:30 pm | *Dr. Rick Funston*

Beef Production "A system approach - back to the basics."

Thursday, Dec 13 | 3:00 pm | *Dr. Rick Funston*

Beef Production "Thinking outside the box"

STOCKGROWERS COLLEGE - SPONSORED BY MULTIMIN USA

Wednesday, Dec 12 | 9:00 am | *Dr. Don Goodman*

Trace Minerals- Getting the Timing Right Impacts your Reproduction and your Bottom Line

Thursday, Dec 13 | 1:30 pm | *Dr. Don Goodman*

Trace Minerals- Getting the Timing Right Impacts your Health Program and your Bottom Line

STOCKGROWERS COLLEGE - SPONSORED BY MONTANA ANGUS ASSOCIATION

Wednesday, Dec 12 | 10:00 am | *Kelli Retallick, Angus Genetics, Inc.'s Genetic Services Director*

Utilizing Genetic Tools for Bull Selection

Bull selection is one of the most influential decisions cow/calf producers can make in a given year. Understanding the tools provided to make these selection decisions can be paramount for your herd's success. Hear from Kelli Retallick, Angus Genetics, Inc.'s Genetic Services Director about the ins and outs of EPDs (expected progeny differences) and \$Values, and how these tools can aid you in making selection decisions.

Thursday, Dec 13 | 2:30 pm | *Kelli Retallick, Angus Genetics, Inc.'s Genetic Services Director*

Genomics: The What and How?

Genomics, genetic or DNA testing have been buzzwords in the seedstock industry for about the past decade, but what does it mean for your individual operation? Learn more about what genomics really is from definition to application and where to capture the value from these technologies in your operation.



STOCKGROWERS COLLEGE - SPONSORED BY 1 MONTANA

**Wednesday, Dec 12 | 9:30 am | Zach Brown & George Bettas, One Montana;
Christian James, Hunable**

Montana Hunter Advancement Program: A Landowner-Driven Solution to hunting access and wildlife management conflicts.

One Montana created the first-ever "Master Hunter" course this past year, and 25 students passed the 50-hour course and earned our certification. Our hunters are in the field this fall working with our landowner partners on personalized access plans and wildlife management goals. In 2019, we plan to offer three classes, expanding our pool of certified "Master Hunters" by four times. MSGA has been a key sponsor and partner of this project since its inception, and we want to keep that partnership front and center as we expand this innovative program. (www.mtmasterhunter.com)

**Thursday, Dec 13 | 3:30 pm | Zach Brown & Mitch Lassa, One Montana;
John Heyneman, Plank Stewardship Initiative;
Ann McCauley, Soil and Water Conservation Districts of Montana**

Resilient Montana Workshop Series Continued: Succession Planning, Enterprise Accounting, and Soil Health
What do soil health and enterprise accounting have in common? Well, we hope that you will come and tell us! This workshop will be structured as a listening session, following a brief introduction from experts. It will serve as a "teaser" for a series of deep-dive rural community workshops on tap for 2019.

STOCKGROWERS COLLEGE - SPONSORED BY GALLAGHER

Wednesday, Dec 12 | 10:30 am | Ray Williams

Thursday, Dec 13 | 2:30 pm | Ray Williams

"Weighing and EID Systems Offer Livestock Producers the Ultimate Record-keeping Powerhouse"

Having access to more information means better management. For seed stock operations which collect large quantities of data, this is especially true and ensures cattle genetics are selected and marketed effectively. The discussion will center on basic weighing to full out data collection best practices for collecting:

- Weaning, yearling, and ultrasound weights
- Mature cow weights
- Body condition scores on every cow at weaning
- Pregnancy status of bred cows
- Vaccination, deworming schedules and dosing records
- Artificial insemination info

STOCKGROWERS COLLEGE - SPONSORED BY CUSTOM AG SOLUTIONS

Wednesday, Dec 12 | 11:00 am | Brett Crosby

Risks and Opportunities in Today's Cattle Markets

Today's volatile markets are full of risk – and opportunity. Crosby will review recent market trends and trade issues; he will then explore key market factors to monitor in the coming months. Crosby will also demonstrate the marketing information and analytical tools available on BeefBasis.com. Finally, Crosby will discuss market risk management tools, including those administered by the USDA's Risk Management Agency (RMA).

OPENING GENERAL SESSION

Wednesday, December 12 at 8:00 am

Speaker: Timothy Williams - Deputy Director, Office of External Affairs

Tim Williams was appointed by the Trump administration as the Deputy Director of External Affairs, Department of Interior. He originates from Nevada, where he served as Deputy Director of the Donald J. Trump for President campaign. Prior to that, he was a partner at a political consulting firm, managing local, state and Congressional races, and he served on the Policy and By-laws committees for the Greater Las Vegas Association of Realtor and the Nevada Association of Realtors. A lifelong Nevada resident, Tim is an avid sportsman and accomplished hunter and fisherman.

The Department of Interior is a workforce of over 70,000 strong serving throughout 2,400+ operating locations to fulfill ONE mission. In addition to Departmental Offices, DOI is comprised of 9 bureaus that work to accomplish it's vast mission: to protect America's natural resources and heritage, honor our cultures and tribal communities, and supply the energy to power our future. These bureaus include:

- Bureau of Indian Affairs
- Bureau of Land Management
- Bureau of Ocean Energy Management
- Bureau of Safety and Environmental Enforcement
- Bureau of Reclamation
- National Park Service
- Office of Surface Mining Reclamation and Enforcement
- U.S. Fish and Wildlife Service
- U.S. Geological Survey

NORTHERN AG NETWORK & THE BEST OF BEEF LUNCH

Wednesday, December 12 at 12:00 pm

Speaker: John F. Stika, Ph.D., President of Certified Angus Beef

As president for the Certified Angus Beef® brand, John Stika guides grassroots programs to deliver premium beef from family farmers and ranchers to consumers' dinner tables. He has led the brand through 11 consecutive years of record sales, helping to satisfy growing demand for great-tasting beef in 17,000 restaurants and grocery stores worldwide.

John grew up on a small family farm in Kansas, and earned a bachelor's and master's degree from Kansas State University, and a doctorate in meat science from the University of Kentucky. He came to the brand in February 1999 as director of feeder-packer relations, and then director of packing and supply development. Moving on to vice president of business development, he led sales growth through retail, foodservice, international and value-added products before becoming president.

Through his expertise and experience from gate to plate, John has served as a board member of the American Meat Science Association, and is actively engaged in beef quality and related committees of the National Cattlemen's Beef Association. John received the Outstanding Young Alumnus award in 2010 from K-State's College of Agriculture and the Achievement award from the American Meat Science Association. He resides with his wife, Deanna, and their three sons in Creston, Ohio, where they care for a small herd of Angus cattle and other livestock.





Demand It All

ACCOUNTABLE

PREDICTABLE

PROFITABLE

SUSTAINABLE

FERTILITY ~ STAYABILITY ~ DOCILITY ~ CARCASS VALUE ~ CALVING EASE ~ UDDER QUALITY

Offering Yearlings, 18 Month Old & 2 Year Olds

BULLS SELL PRIVATE TREATY

In the Spring & Fall

FEMALE AND EMBRYO SALE IN SEPTEMBER

*Call or email for
more information!*

Mark and Della Ehlke
Lacey Ehlke - Jane'a Ehlke
info@ehlkeherefords.com

Videos and Photos Available Online
www.ehlkeherefords.com
(406) 266-4121 • (406) 439-4311

The following policies expire in 2018 and will be reviewed during the policy meetings at Annual Convention. All Montana Stockgrower Rancher, Feeder/Stocker, or Young Stockgrower members in good-standing are able to contribute to discussions and vote during policy meetings. Policies may be revised or deleted during First and Second Readings. Policies may be voted Pass or Fail during Third Reading.

Voting members will be identified by a red band with the words voting member on the convention attendee name badges. To view the full MSGA Policy Book, visit the Policies & Issues page at mtbeef.org and log-in with your active membership account. Proposed resolutions may be submitted by MSGA members and affiliate groups in good-standing and should be submitted to the MSGA office as soon as possible.

BEEF PRODUCTION & MARKETING COMMITTEE

CATTLE HEALTH SUBCOMMITTEE

- CH 001 - BOVINE TRICHOMONIASIS - 1992 (Revised 2013)

WHEREAS Bovine Trichomoniasis is a venereal disease that is causing infertility and severe economic losses in Montana cattle herds;

THEREFORE, BE IT RESOLVED that MSGA encourages cattlemen to use good cull management strategies and send bulls and cows to sales for slaughter only.

- CH 008 - NATIONAL LIVESTOCK IDENTIFICATION SYSTEM - 1986 (Revised 2013)

WHEREAS MSGA recognizes a need for a national livestock identification system;

THEREFORE, BE IT RESOLVED MSGA supports the livestock industry in the development of an economically feasible national identification system, with continuing recognition of the hot iron brand as a method of identification for individual states as they see fit; and

BE IT FURTHER RESOLVED MSGA requests that the National Animal Identification System be a voluntary program instead of mandatory.

MARKETING SUBCOMMITTEE

- M 001 - E. COLI O157:H7 DELISTING - 1998 (Renewed 2013)

WHEREAS E. Coli O157:H7 is a natural occurring bacteria; and

WHEREAS the bacteria can enter the food chain at any point up to consumption from many different sources; and

WHEREAS most food handlers are not trying to maliciously contaminate the food and whereas E. Coli O157:H7 is classified as an "ADULTERANT" which makes it a felony for contamination of a product;

THEREFORE, BE IT RESOLVED MSGA supports delisting E. Coli O157:H7 as an ADULTERANT.

- M 004 - VALUE ADDED - 1998 (Renewed 2013)

WHEREAS it is in the economic interest of agricultural producers and citizens of Montana to develop industry and business which add value to Montana agricultural production;

THEREFORE, BE IT RESOLVED MSGA supports the research and development, with the assistance ... of the MT Department of Agriculture, of businesses which add value through processing and market development for Montana source-verified beef products.

- M 031 - PROMOTION OF US BEEF - 2008 (Revised 2013)

WHEREAS beef producers of the United States desire checkoff funds be utilized to promote U.S. beef; and

WHEREAS the Agricultural Marketing Service has ruled that because of the Country of Origin Labeling (COOL) law, checkoff funds may be utilized to promote U.S. beef; and

THEREFORE, BE IT RESOLVED MSGA works to amend the Beef Promotion and Research Act to state in the statute that the promotion of U.S. beef be allowed under the Act and Order; and BE IT FURTHER RESOLVED that the portion of checkoff funds allocated to promote U.S. beef not be greater than the portion of checkoff fund revenues paid by U.S. producers.

- M 033 - HORSE PROCESSING FACILITIES - 2008 (Revised 2013)

WHEREAS the horse processing market as an industry is vitally important to the United States agriculture industry;

THEREFORE, BE IT RESOLVED MSGA supports re-opening the horse processing industry; and

BE IT FURTHER RESOLVED MSGA supports legislation to authorize construction of horse processing facilities in the United States.

LAND USE & ENVIRONMENT

ENDANGERED SPECIES SUBCOMMITTEE

- EES 021 - WOLF KILL NUMBERS - 2008 (Renewed 2013)

WHEREAS the number of livestock kills confirmed by USDA Wildlife Services is only a small fraction of actual livestock kills;

THEREFORE, BE IT RESOLVED MSGA encourages USDA Wildlife Services and DFWP to develop scientifically acceptable total kill projections and to consistently report not only confirmed and probable livestock kill numbers, but also likely kill numbers; and

BE IT FURTHER RESOLVED MSGA encourages these agencies to develop cost analyses and mitigation strategies for the indirect costs, and to report these indirect costs along with the kill statistics.

- ES 029 - WILDLIFE SERVICES FUNDING - 2013

BE IT RECOMMENDED MSGA supports DOL requesting additional general funding for the diagnostic lab in order to increase the percentage of per capita funds utilized for Wildlife Services.

LAND USE SUBCOMMITTEE

- LU 003 - WEED RESEARCH/EDUCATION - 1982 (Renewed 2013)

WHEREAS the spread of noxious weeds in Montana is causing a severe economic burden on many farms and ranches; and

WHEREAS on many weed-infested areas of Montana chemical control is not feasible due to sociological, political, or economic reasons; and

WHEREAS chemical control involves repeated treatments to keep weeds under control, now the only solution to the noxious weed epidemic in Montana;

THEREFORE, BE IT RESOLVED MSGA urges the Montana Experiment Station and Extension Service to make noxious weed control research and education a top priority need in future years with special emphasis on the biological aspects of weed control; and

BE IT FURTHER RESOLVED MSGA supports adequate state legislative funding of such research and education programs on a continuing basis.

- LU 024 - ROAD CLOSURE - 2002 (Renewed 2013)

WHEREAS livestock producers in northern Montana in and around the Charles M. Russell (CMR) National Wildlife Refuge are being affected by road closures in proposed wilderness study areas within the CMR; and

WHEREAS these road closures impede a permittee's ability to properly manage his allotment; THEREFORE, BE IT RESOLVED MSGA supports the Montana Association of State Grazing Districts and the Montana Public Lands Council's opposition to any road closures that deny any access for livestock management purposes to federal permittees without following proper administrative procedures which include a full public comment period and review.

- LU 050 - AGRICULTURAL SOLID WASTE DISPOSAL - 2013

BE IT RECOMMENDED MSGA initiate working with other agricultural groups, Montana State University Extension and the Department of Environmental Quality, to develop guidelines that will ensure compliance of the solid waste disposal statutes for farms and ranches. This will be a proactive measure for private property owners to protect from potential liabilities, fines or harmful legislation.

LANDOWNER/RECREATION & WILDLIFE SUBCOMMITTEE

- LR 001 - NO NET ACREAGE GAIN - 1992 (Renewed 2013)

WHEREAS the Montana Department of Fish, Wildlife and Parks under the authority of HB 526 has the authority to purchase fee title land in Montana to be used for Wildlife Management Areas; and

WHEREAS the state and federal government ownership of property erodes local tax base;

THEREFORE, BE IT RESOLVED MSGA supports a "No Net Acreage Gain" provision concerning FWP fee title ownership of wildlife management areas.

- LR 005 - MONTANA FISH WILDLIFE & PARKS DIRECTOR ELECTION - 1998 (Revised 2013)

BE IT RESOLVED MSGA is opposed to the Montana Fish, Wildlife & Parks director and commission members becoming an elected positions.

- LR 008 - PRIVATE PROPERTY RIGHTS - 1993 (Renewed 2013)

WHEREAS private property rights and the protection thereof is vital to the ranching industry; and WHEREAS private property rights are protected by the United States and Montana State Constitutions; and



WHEREAS state agency regulations and actions may affect the use and enjoyment of such private property; and

WHEREAS such regulations may effectuate a taking of private property to which compensation is constitutionally required;

THEREFORE, BE IT RESOLVED MSGA supports state legislation protecting private property rights from undue regulation which results in the taking of private property.

- LR 016 - FUNDING OF NOXIOUS WEED CONTROL - 1998 (Renewed 2013)

WHEREAS state and federal agencies have numerous land holdings throughout the state of Montana and are in need of additional funding for personnel and equipment to fight noxious weeds;

THEREFORE, BE IT RESOLVED MSGA requests money be allocated within each agency's budgets for more crews, equipment, including aerial spraying, and chemicals to help in the fight of noxious weeds in these lands.

- LR 025 - ELK HARVESTS - 1998 (Renewed 2013)

WHEREAS elk numbers are increasing substantially in certain districts;

THEREFORE, BE IT RESOLVED MSGA recommends to FWP that the Department develops and implements hunting seasons and harvest strategies which will result in targeted levels of elk harvest being achieved in each district.

- LR 034 - CHARLES M. RUSSELL WILDLIFE REFUGE BISON REINTRODUCTION - 2008 (Revised 2013)

BE IT RESOLVED MSGA opposes any bison, wild or domesticated, from any entities, federal or state parks, to be imported and set free to graze within the boundaries of the CMR Wildlife Refuge.

- LR 042 - COUNTY COMMISSION APPROVAL — 2013

BE IT RESOLVED MSGA supports County Commissioners' approval prior to any state, federal or tribal agency transplanting on to public lands within the counties, bison, or other government controlled animals posing negative impacts on local economies and private property rights.

WATER SUBCOMMITTEE

- WA 016 - VISION 2005 - 1998 (Renewed 2013)

WHEREAS Vision 2005 sets a goal of increasing irrigated lands in Montana by approximately 500,000 acres statewide; and

WHEREAS encouraging the development of additional irrigated acreage may involve potential conflicts with the Montana Water Use Act, the Montana Environmental Policy Act (MEPA), and perhaps other environmental laws;

THEREFORE, BE IT RESOLVED MSGA supports legislative modifications of any environmental law to facilitate the development of additional irrigated lands, while protecting the water rights of existing water right holders.

- WA 018 - AFO/CAFO FUNDING - 2003 (Renewed 2013)

WHEREAS the NRCS currently is only using cost share dollars to fund the pollution control portion of the relocation costs. Currently, there is no cost sharing for scales, cattle handling facilities, barns, shops and feed handling facilities;

THEREFORE, BE IT RECOMMENDED MSGA actively engages NRCS to change or modify funding mechanisms associated with AFO/CAFOs to assure adequate funding sources be made available for all AFO/CAFO mitigation or relocation measures, including if necessary, relocation of AFO/CAFOs.

TAX, FINANCE & AG POLICY

AG POLICY SUBCOMMITTEE

- AG 002 - LIABILITY INSURANCE ON VEHICLES - 1988 (Renewed 2013)

BE IT RESOLVED MSGA favors the continued concept in Montana that liability for agricultural trailers be automatically covered by the liability insurance of the vehicle pulling the trailer.

- AG 028 - BEEF CHECKOFF PROGRAMS - 1998 (Renewed 2013)

WHEREAS MSGA supports the current national beef checkoff program; and

WHEREAS education programs are needed to inform beef producers on the administration process and use of beef checkoff funds;

THEREFORE, BE IT RESOLVED MSGA actively supports the current beef checkoff program and will become proactive in providing educational programs and information to beef producers, and coordinate its efforts with other ag groups where possible.

- AG 029 - EXPERIMENT STATION AND EXTENSION SERVICE - 1992 (Renewed 2013)

BE IT RESOLVED MSGA urges adequate funding and support for the statewide programs of the Montana Agricultural Experiment Station and the Montana Cooperative Extension Service. These agencies provide critical support for agriculture, Montana's #1 industry.

- AG 034 - WICHE - 1996 (Revised 2013)

WHEREAS the veterinary profession is an integral part of the livestock industry system and accessibility to well trained D.V.M.'s is important to animal production efficiency and a reliable source of training for veterinarians is fundamental to the sustainability of the Montana livestock industry;

THEREFORE, BE IT RESOLVED MSGA supports the current nine slots per year, or 18 slots for the biennium, in the WICHE veterinary medical slots within the Montana State University System budget to provide Montana residents access to the veterinary profession.

- AG 050 - YOUNG STOCKGROWER DUES STRUCTURE — 2008 (Renewed 2013)

WHEREAS recruitment and retention of young stockgrowers is critical, imperative, and essential to the future of MSGA; and

WHEREAS more than one year may be needed for new young stockgrowers to understand the benefits of MSGA;

THEREFORE, BE IT RECOMMENDED the MSGA Board adopts a new dues structure for new Young Stockgrower members consisting of \$75 per year, capped at 3 years or until the member reaches age 40, whichever comes first, and regular dues thereafter.

- AG 051 - LEGISLATIVE UPDATES — 2008 (Renewed 2013)

WHEREAS one of MSGA's strongest assets is their ability to effectively lobby and influence government policy for our industry and land owners; and

WHEREAS the retention of members is critical to the sustainability of MSGA;

THEREFORE, BE IT RESOLVED MSGA sends out two legislative updates including a call to action to past members inviting them to rejoin MSGA and actively support policy.

- AG 052 - MEMBERSHIP RECRUITMENT — 2008 (Revised 2013)

WHEREAS membership recruitment and retention is vital to the long term health of MSGA;

THEREFORE, BE IT RECOMMENDED the MSGA Board of Directors looks at the following concepts that will enhance recruitment and retention of members:

1. Develop team concept approach to recruiting.
2. Develop mentor program for new members.
3. Focus on local associations and getting them involved recruiting members and developing policy (Affiliate Mentoring Program).

- AG 053— SMALL RANCHER MEMBERSHIP — 2013

BE IT DIRECTED the MSGA board explore and propose rules concerning small ranchers' membership; and report back to Membership Committee with all details for their approval in June of 2014 at the Mid-Year meeting.

TAXATION SUBCOMMITTEE

- TX 002 - WORKERS' COMPENSATION - 1992 (Renewed 2013)

BE IT RESOLVED MSGA supports efforts to reduce the cost of providing benefits through preventative management, including safety encouragement and fraud detection, through reforming benefits together with adequate rehabilitation and early return to work.

- TX 021 - THE CLEAN AIR LIVESTOCK TAX — 2008 (Revised 2013)

WHEREAS Environmental Protection Agency (EPA) in its Advance Notice of Proposed Rulemaking (ANPR) for regulating greenhouse gas emissions under the Clean Air Act would give authority to regulate greenhouse gas for not only greenhouse gas from manmade sources like transportation and industry, but also "stationary" sources, which would include livestock.

THEREFORE, BE IT RESOLVED MSGA opposes regulating greenhouse gases under the Clean Air Act.

ENVIRONMENTAL STEWARDSHIP AWARD

Sponsored by Montana Beef Council and World Wildlife Fund

The Environmental Stewardship Awards program recognizes cattle producers across Montana who use innovative practices to protect and enhance natural resources, while maintaining or increasing the profitability of their businesses.

Wednesday, December 13
12:30 - 1:30 pm



YOUNG STOCKGROWERS MEETING & SOCIAL

Montana Young Stockgrowers is a committee within MSGA for members ages 18-40. Come meet your peers and learn more about YSG programs, the new Stockgrowers Leadership Series, Young Cattleman's Conference and take advantage of this networking opportunity with other young members of Montana's ranching community.

Tuesday, December 12
4:00 - 5:00 pm



NUTRA-LIX SADDLE DRAWING

Enter to ride away on a brand new saddle! This handcrafted saddle is generously sponsored by our friends at Nutra-Lix. One lucky MSGA member will win the saddle at the Northern Ag Network Lunch. Sign up at the registration desk.

You must be present to win!

LIVE AUCTIONS

Montana Seedstock and Commercial Cattle Directory Priority Page Ads

The Montana Seedstock and Commercial Cattle Directory, published each August by the Montana Stockgrowers Association, is your resource for Montana cattle. This premier directory is mailed to MSGA members, livestock markets, feeders, and cattle buyers across the U.S. It is also distributed at the numerous national and statewide trade shows, seedstock sales, and other national and state agricultural events.

Concrete Model C250 Electric Tank - sponsored by Concrete Cattle Waterers

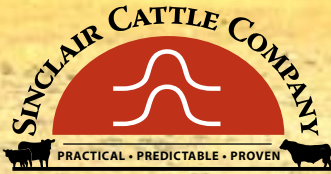
Concrete Cattle Waterers and Montana Stockgrowers Foundation have teamed up to support Montana youth with scholarships and other forms of support to further their education in cattle production and feeding! Concrete will attend the 2018 Annual Convention, and have agreed to bring a \$1000.00 Concrete Model C250 Electric Tank for auction. Proceeds to benefit the Stockgrowers Foundation. The C250 Electric Tank will be auctioned Thursday night at the Grand Finale Banquet.



Share your experience online #MSGA18

Do you need a more direct path to profit?

Contact Logan Baker for more information.
 307-254-1477 or 1-800-761-2077
 email: info@sinclaircattle.com or www.sinclaircattle.com 
 Duncan Smith, Owner | Logan Baker, Manager



FRUSTRATION FREE INTERNET SALE

November
 8 - 10, 2018

Featuring coming 2 year old
 feed efficiency tested bulls!



Original N-Bar Genetics Working For You
Staying true to the Legacy

Reliable genetic packages result from our planned, multi-generational breeding program, which focuses on the use of proven genetics to produce a fertile cow, get a live calf on the ground and quality carcass with optimum growth.



FALL PERFORMANCE SALE

Saturday, November 24, 2018

Public Auction Yards, Billings, MT • 11:00 AM

2000 Angus Sell!

325 TOTAL PERFORMANCE BULLS

160 Outstanding Fall Yearlings

• The best of our 2017 fall bulls by Connealy Spur, Vermilion Huntley, Connealy Doc Neal, SAV Privilege 3030, KR Joe Canada 5372 & Connealy Countdown. **ANGUS GS and PAP tested!**

165 Big, Stout Coming Two's

• Sired by Spur, Countdown, Privilege, Game Day, Joe Canada & BTR High Regard 552. Several are **ANGUS GS and PAP tested!**

75 SELECT REGISTERED BRED HEIFERS

• Mostly Bred to Casino Bomber!

1350 FANCY COMMERCIAL BRED ANGUS HEIFERS

• All one iron. • All bred to Countdown - Pasture bulls, sons of Countdown.
 • February - March 2019 calvers. • Ultrasound pregnancy tested to sex and short calving periods

SPECIAL FEATURE!

2nd Generation Dispersion

• All the Bred Cows & Heifers owned by the sons & daughters of Pat Goggins.
 • 50 head sell! A tremendous offering.

100 - Dispersion of all our 2011 born registered cows!

• Bred to: Spur, Casino Bomber, BobCat Universal & Connealy Doc Neal.
 • Calve February - March 2019.

50 - Dispersion of all the April calving registered cows!

• These are high performing cows. 3 to 6 years old. bred to top Vermilion Sires.

200 - Dispersion of all our 2011 born commercial cows!

• Always a feature from the Diamond Ring Ranch. Calve March 2019.



His service is a feature.
 60 cows and heifers bred to him!



A powerhouse bull that does it all!
 His sons, daughters and service sell!



Vermilion Ranch

Pat Goggins Family, Owners

PO Box 30758 • Billings, MT 59107 • E-mail: bcook@cattleplus.com • www.vermilionangus.com
 Bob Cook 406.670.0078 • Jake Kading 406.672.5844

Jeff Mosher • Vermilion North | Greg Roberts • Diamond Ring | Brandon Mosher • Pryor Creek | Bill Shaules • South Pryor



WIN

THE USE OF A
MF6716S TRACTOR
WITH A **FL.4124 LOADER**

for **200** HOURS or **8** MONTHS



Sponsored by Montana Stockgrowers Association
& Montana Massey Ferguson Dealerships

Raffle will be held at the **MSGA Annual Convention**
Billings, MT | December 2018

For more details or to purchase raffle tickets
contact MSGA at (406) 442-3420 or visit www.mtbeef.org

PREMIUM COMES STANDARD.

Profitability Starts with Fertility



53RD ANNUAL FALL BULL SALE

DECEMBER 6, 2018 | 11 AM MST

AT THE RANCH – HARRISON, MT

425 PAP-Tested, Coming 2-Year-Old Bulls

350 Home Raised, SITZ-Bred Heifers, 120 SITZ-Bred, Running-Age Cows

Selling Sons of SITZ Asset 402C, SITZ Broker 12985, SITZ Investment 660Z, SITZ Logo 12964, SITZ Response 405C, SITZ Royal 9784, Spring Cove Paygrade 5064, KM Broken Bow 002, Koupals B&B Atlas 4061, and SAV Resource 1441

Some breeders talk about fertility—at SITZ Angus we measure it, research it, and make breeding decisions based on it.

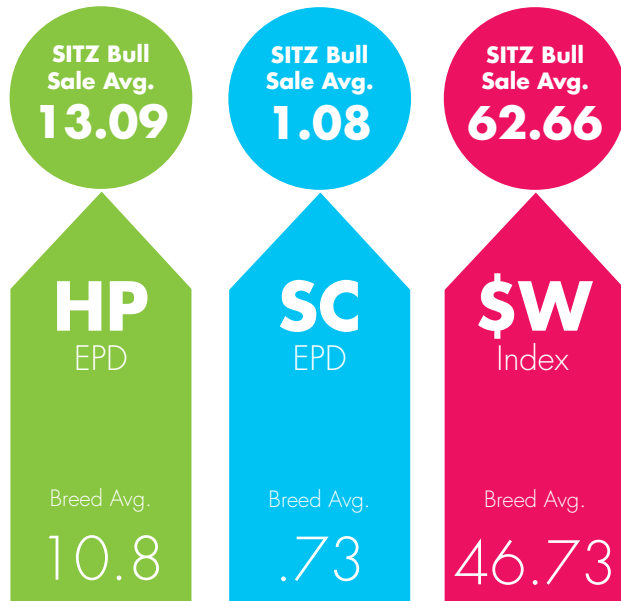


Designed by AgTown

58 SITZ Logo sons sell!

SITZ Logo 12964

BW -3.6 (Top 1%), **HP 17.5** (top 1%),
SC 1.92 (Top 3%), **\$W 73.07** (Top 4%)



2018 SITZ Breeding Season Results (Fixed-Time AI)			
Head	Pedigree	AI conception	Open
71	SITZ Logo Daughters	79%	1%
102	SITZ Upward Daughters	72%	1%

Text SITZ to (406) 960-4170 to receive updates by text!

For additional details, please call SITZ Angus or visit SitzAngus.com.

Dillon Ranch
Jim Sitz (406) 683-5277
SitzAngus@gmail.com

Harrison Ranch
Bob Sitz (406) 685-3360
SitzAngus@3Rivers.net

Marketing
Joe Jones (208) 670-2364
JoeJones@SitzAngus.com

Please help us extend our appreciation to all the 2018 Annual Convention & Trade Show sponsors. Without their generous support, these events would not be possible.



DON'T MISS YOUR CHANCE TO BID ON THIS JOHN DEERE GATOR

Support the **Montana Stockgrowers Association's** work
at the state capital and in Washington D.C. by bidding on this

JOHN DEERE GATOR

Sponsored by Frontline Ag Solutions

JOHN DEERE GATOR XUV590i

Top Speed: 45 mph | Engine: 586cc gas
Cylinders: Inline-twin-cylinder | Horsepower: 32 hp @ 5600 rpm*

Text gator to 855-735-2437
to join the event and start bidding.
Item ID# 0101

Auction will be open until
3:00 p.m. on Dec. 13, 2018



FRONTLINE AG SOLUTIONS

LOOK TO THE FUTURE WITH

Bobcat B ANGUS



Circle L Gus Reg: 17993084

Musgrave Big Sky Reg: 17614813



\$W	+73.96	3%
\$F	+72.19	25%
\$G	+11.86	95%
\$B	+154.43	15%



\$W	+60.00	20%
\$F	+81.99	15%
\$G	+40.93	25%
\$B	+143.22	25%

CED	BW	WW	YW	SC	MILK	CW	MARB	RE	FAT
+12	-1.1	+62	+100	+38	+26	+59	+14	+72	+062
10%	10%	20%	35%	75%	35%	10%	90%	15%	95%

CED	BW	WW	YW	SC	MILK	CW	MARB	RE	FAT
+11	+1.8	+65	+112	+92	+24	+39	+82	+31	+040
15%	65%	15%	20%	40%	50%	40%	15%	75%	90%

Sire: S Chisum 6175 MGS: HARB Pendleton 765 J H

Sire: Connealy Earnan 076E MGS: S A F 598 Bando 5175



Our females will take you down the right road

14th Annual Production Sale

JANUARY 26, 2019 • 12:30 PM
WESTERN LIVESTOCK AUCTION
GREAT FALLS, MT

SELLING 200 BULLS
700 BRED HEIFERS
300 BANGS VACCINATED HEIFER CALVES
150 2 COMING 3 YEAR OLD COWS
50 8-10 YEAR OLD COWS

Bryan Ratzburg: (406) 937-5858 Cell: (406) 788-3272 | Ernie Ratzburg: Cell: (406) 788-3244

265 Bobcat Angus Loop • Galata, Montana 59444

bobcatangus@northerntel.net • www.bobcatangus.com



10th Annual Bull Sale
DECEMBER 12, 2018 - 1 PM

At The Clear Creek Ranch • South of Chinook, Montana

SHIPWHEEL
CATTLE COMPANY

Offering ~

100 RANCH RAISED
COMING 2 YEAR OLD BULLS

100+ BRED HEIFERS

30 HEAD DISPERSION OF 2008 MODEL COWS

SONS OF:

- SAV Resource
- SAV Renown
- SAV Recharge
- Myers Keystone M263
- S Chisum 255
- Basin Paycheck 5249
- Shipwheel Signature 4541
- Shipwheel Montana 2600
- Pyramid Strategy 4086

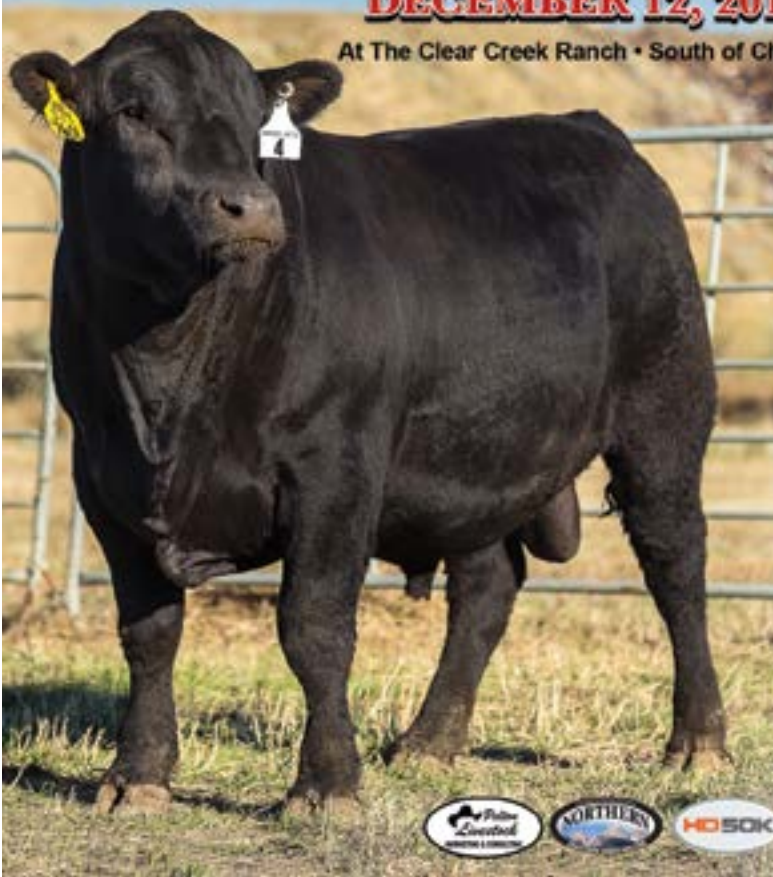
FACTS ABOUT THE BULLS:

- NO hoof trimming on Bulls or Cow herd
- NO Creep Feed
- Only the top 50% of the 2017 calf crop make the sale
- Tested for BVD, Fertility and Zoetis i50K/HD50K
- Turned out on grass for the summer as yearlings
- Developed slowly at home to insure soundness and longevity
- Put more trust in these older, more mature bulls to do the job
- Backed by one of the best guarantees in the business

KLINT, LORI, AUSTIN, & BREE SWANSON

2265 Gooseberry Lane • Chinook, MT 59523 • 406-357-2492

www.shipwheelcattle.com



Are you looking to improve?

BETTER BULLS
BETTER VALUE
BETTER SELECTION

275 BULLS SELL!

**120 COMING TWOS
& 150 YEARLINGS**

**150 COMMERCIAL
BRED FEMALES**

TUESDAY
NOVEMBER 27
2018

Home of America's Longest Established Annual Bull Sale

IMPROVE
Your Bottom Line



www.StevensonAngus.com

PO Box 170 • Hobson, MT 59452 (406) 423-7500



MONTANA PUBLIC LANDS COUNCIL

The main responsibility of the Montana Public Lands Council is to develop and coordinate unified policy positions and pursue legislative and regulatory actions that most effectively represent Montana public lands grazing users. The Montana Public Lands Council is a leading state organization in monitoring, initiating and coordinating actions on priority public lands issues in the state.



MONTANA ASSOCIATION OF STATE GRAZING DISTRICTS

Of all the western states, Montana alone has a statutory network of State Grazing Districts cooperative areas of diverse ownership that allow for the greatest use of range forage while conserving limited natural resources. Grazing districts are non-profit, cooperative associations of ranchers and farmers who raise livestock. The Montana Grass Conservation Act of 1939 organized these cooperative grazing areas into 26 districts-which include federal grazing lands mingled with state, county and private lands-encompassing more than 10 million acres. Today there are 29 total districts, concentrated in the eastern part of the state.

TUESDAY, DECEMBER 11

10:00 am - 11:30 am

Grass Conservation
Commission Meeting

TUESDAY, DECEMBER 11

12:30 pm - 2:30 pm

Joint Board Meeting

TUESDAY, DECEMBER 11

3:00 pm - 5:00 pm

MPLC Annual Meeting



Share your experience online [#MSG18](#)

GREEN MOUNTAIN ANGUS RANCH

RYEGATE, MONTANA

The Cattleman's Choice

Fall Production Sale

Friday **Nov. 16, 2018**

At the Ranch, Ryegate, MT
Lunch 11:30 a.m. – Sale 1:00 p.m.

Offering...

225 Yearling Angus Bulls &
100 Commercial Bred Heifers

Sync'd & AI'd to Connealy Black Granite



DISH 232 &
Direct TV 603

Sires Represented:

SAV Resource, JMB Traction 292, HA Cowboy Up,
Musgrave Aviator, Koupals B&B Fix It 6072,
Diamond In Rough, 3F Epic 4631,
GMAR Super Duty, and Basin Bonus



Reg: 19088484 • Sire: S A V Resource 1441



Reg: 19088527 • Sire: JMB Traction 292



Reg: 19088516 • Sire: S A V Resource 1441



Reg: 19088524 • Sire: S A V Resource 1441



Reg: 19115234 • Sire: HA Cowboy Up 5405



Reg: 19088544 • Sire: S A V Resource 1441



Reg: 19088676 • Sire: HA Cowboy Up 5405



Reg: 19088521 • Sire: JMB Traction 292



Reg: 19088501 • Sire: Koupals B & B Fix It 6072

Green Mountain Angus Ranch

Tim & Kris Todd

35 Green Mountain Drive • Ryegate, MT 59074

406-568-2768 (H) • 406-220-1975 (C)

gmar@midrivers.com

- ✓ Free Wintering ✓ Free Delivery
- ✓ Volume Discounts ✓ First Season Guarantee

www.GreenMountainAngus.com

WIN

ONE TON OF SweetPro Feed



ONE PALLET OF Redmond Natural Trace Mineral

SPONSORED BY

Agri Best Feeds.com



SweetPro
PREMIUM FEED SUPPLEMENTS



All current MSGA rancher, feeder/stocker,
and young stockgrower members have a chance to win.
Drawing will be held at the MSGA Annual Convention in December.
Must be present to win!

WWW.MTBEEF.ORG



LODGING OPTIONS AND DETAILS

Hotel rooming blocks have been created at the **Double Tree by Hilton** and at the **Northern Hotel**.

Reservations must be made by Nov. 28, 2018 in order to guarantee room availability and price.
Please reference Montana Stockgrowers Association's Annual Convention when making reservations.

Double Tree by Hilton
(406) 252-7400

Northern Hotel
(406) 867-6767

QUESTIONS?

Please contact **Katie** at the **MSGA** office
(406) 442-3420
or **katie@mtbeef.org**



DON'T MISS MSGA AT THESE OTHER ANNUAL EVENTS!

MIDYEAR MEETING 2019 | Miles City

Join Montana ranchers for our summer meeting with Cattlemen's Colleges, Foundation Social and Fundraiser, Policy Meetings, and a semi-formal dinner event with live entertainment.

T-BONE CLASSIC GALA DINNER & GOLF TOURNAMENT September 2019 | Big Sky Resort & Golf Course

Join leaders of Montana's ranching and business communities for a gala dinner and golf tournament at one of the best resorts and courses in Big Sky Country! Event benefits Montana Stockgrowers Foundation.



Complete Dispersal - Retirement Sale

Rice Ranches Inc.

43rd Annual Production Sale

November 25, 2018

Sunday, 12:00 PM • at the ranch, Harrison, MT • Lunch at 11:00 AM

SAV Settlement 7278



Bred to our 1st calf heifers and cows.

350 AI Calf Sexed Bred Heifers

- 100 AI Calf Sexed Bred 1st Calf Heifers
- 600 AI Bred Mixed-Age Cows

200 AI DNA Tested Coming 2-Year-Old Bulls

- 10 Herd Sires

Rice's Ranches Inc.

Barry & Diane Rice

406.685.3468 • 800.504.0003 • info@riceranches.com

Stevenson Big River 70068



Bred to our 1st calf heifers and cows.

www.riceranches.com

A History of Excellence with a Vision for the Future

1500+ Angus Sell

Monday, Nov. 26th

at the Ranch
Hobson, MT

11:00 AM MST

STEVENSON'S

DIAMOND DOT



Selling **37** Sons



CED	+13	CED	+13
BW	-2.4	BW	+0.6
WW	+79	WW	+82
MILK	+18	MILK	+14
YW	+134	YW	+144
Marb	+0.71	Marb	+0.37
RE	+0.46	RE	+0.56
\$B	143.24	\$B	146.08

DL Sonic 444

17918412

Selling **16** Sons & Grandsons



JVC Cavalry V3326

17784803

The Largest Complete Offering of Outcross Yearlings you will find this Fall!

Lot **3**

Diamond Sonic 6708 JS

CED	BW	WW	MILK	YW	Marb	RE	\$B
+3	+3.1	+98	+12	+172	+0.26	+0.40	158.23

Lot **4**

Diamond in the Rough 314F JS

CED	BW	WW	MILK	YW	Marb	RE	\$B
+7	+1.8	+69	+19	+120	+0.7	+0.64	169.40

Lot **12**

Diamond Cowboy Up 30F8

CED	BW	WW	MILK	YW	Marb	RE	\$B
+4	+0.6	+80	+24	+133	+0.48	+0.73	172.46

Lot **25**

Diamond Resource F500

CED	BW	WW	MILK	YW	Marb	RE	\$B
+9	+1.7	+71	+18	+122	+0.44	+0.82	147.33

Lot **51**

Diamond Cavalry 658F

CED	BW	WW	MILK	YW	Marb	RE	\$B
+8	+1.9	+93	+21	+165	+0.28	+0.76	165.88

Lot **62**

Diamond Sonic 6F13

CED	BW	WW	MILK	YW	Marb	RE	\$B
+5	+2.8	+86	+18	+145	+0.51	+0.53	173.58

Lot **112**

Diamond Sonic F691

CED	BW	WW	MILK	YW	Marb	RE	\$B
+11	-0.3	+87	+27	+149	+0.68	+0.63	174.34

Lot **224**

Diamond Payweight 615F

CED	BW	WW	MILK	YW	Marb	RE	\$B
+1	+2.2	+83	+17	+136	+0.46	+0.63	154.01

Lot **239**

Diamond Sonic F631

CED	BW	WW	MILK	YW	Marb	RE	\$B
+13	-0.7	+72	+14	+131	+0.53	+0.27	131.29

Lot **251**

Diamond Cavalry 4243 MM

CED	BW	WW	MILK	YW	Marb	RE	\$B
+12	+0.1	+74	+29	+125	+0.59	+0.51	157.10

1100+ Commercial Females

- Featuring 200+ 2-Year old Cows with sexed pregnancies. These young cows have had a calf, bred back and are sorted into calving groups.
- Angus Bred Heifers sorted into calving & sire groups.
- A fancy set of F1 Baldy Bred Heifers.
- Angus Heifer Calves
- Group of F1 Heifer Calves
- Proven Cows



Clint & Adana Stevenson

Hobson, MT 59452

406.374.2250 (home)

406.366.9023 (Clint cell)

www.StevensonsDiamondDot.com

240 Yearling Bulls

110 Fall & Coming 2-Yr Old Bulls

80 Registered Females

World Class **BULL SALE**

TUESDAY, JANUARY 22, 2019

HOME TO **THREE** OF THE **TOP SIX** SIRES BY REGISTRATION IN 2017



CL1 DOMINO 6128D ET

- HIGH SELLER IN COOPER'S 2017 SALE
- HAS AN INCREDIBLE CALF CROP AT CHURCHILL!
- 24 SONS AVERAGED 760 LBS AT 205 DAYS!
- VERY TOP OF THE BREED MATERNAL!



CHURCHILL KICKSTART 501C ET

- HOMOZYGOUS POLLED CURVE BENDER!
- LOW ON BIRTH WEIGHT + HIGH ON GROWTH!
- DARK RED PIGMENTED, STOUT AND DEEP!



CCC

CHURCHILL CATTLE COMPANY

1862 YADON RD. MANHATTAN, MT 59741

FIND US ON FACEBOOK OR VISIT

WWW.CHURCHILLCATTLE.COM

DALE & NANCY VENHUIZEN • DALE CELL: 406-580-6421 • OFFICE/HOME: 406-284-6421 • DALE@CHURCHILLCATTLE.COM

First/Last Name _____

Company/Ranch Name _____

Address _____

City _____ State _____ Zip _____

Phone Number _____ E-mail _____

MEETING AND MEAL REGISTRATION PACKAGES

Registration Package	Price/Person	Quantity	Total
<input type="checkbox"/> Meeting Registration (includes access to policy meetings, sessions, stockgrowers colleges, and the Trade Show)	\$100/attendee	_____	\$ _____
<input type="checkbox"/> Northern Ag Network & the Best of Beef Lunch	\$25/attendee	_____	\$ _____
<input type="checkbox"/> Trade Show Dinner	\$25/attendee	_____	\$ _____
<input type="checkbox"/> President's Lunch	\$25/attendee	_____	\$ _____
<input type="checkbox"/> Grand Finale Dinner/Auction	\$50/attendee	_____	\$ _____
TOTAL		_____	\$ _____

Pre-registration is encouraged to ensure availability! Children 12 years and younger are FREE to attend convention. Children 13 years and older need to be registered.

Your registration form must be accompanied by your payment and postmarked prior to Dec. 1, 2018 to receive pre-registration discounts. Registration is also available online at www.mtbeef.org for your convenience. Please call the MSGA office if you have any questions about the convention or registration! ***Thank you for your dedication to MSGA!***

PAYMENT Check (Please make check payable to MSGA) Credit Card (Visa or Mastercard please)

Credit Card Number _____

Expiration Date _____

Signature _____

Please mail this form and payment to MSGA
by Friday, Dec. 1, 2018

MSGA, 420 N. California, Helena, MT 59601

Fax credit card payment to (406) 449-5105
or email katie@mtbeef.org





MONTANA STOCKGROWERS ASSOCIATION

420 N. California | Helena, MT 59601